



TEL: (517) 546-3220

# PARTS CATALOG AND REPAIR MANUAL

**ETA-4 & ETA-8**

## **PARTS AND REPAIR MANUAL**

This manual has been compiled to expedite the ordering of repair parts for Unified Industries' products, as well as to present to maintenance personnel the correct method of servicing the product.

In order to show all component details of Unified Industries' products, an exploded view has been shown for each model. Further technical information is available in our current full line product catalog.

### **INSTRUCTIONS FOR ORDERING**

Locate the model required in the index and turn to the page number indicated for the exploded view.

Each serviceable part or sub-assembly in the exploded view is identified by a reference number. Use the reference number to locate the necessary part information in the parts list on the opposite page.

Any parts listed without a reference number in the parts list are not sold separately, but are included in the sub-assembly above it as shown in the exploded view. Each item listed as a sub-assembly will be sold complete including all of its component parts listed directly below it.

The parts list quantity column gives the required amount of each component part for each complete assembly.

Specify which model each part is being ordered for to ensure that the correct part is shipped.

Always use the complete stock code number and part description for each part being ordered.

Specify the quantity needed for each part being ordered.

Mail your order to: Unified Industries, Inc.  
1033 Sutton St.  
Howell, MI 48843

or call our Sales Engineer at: (517) 546-3220

## **GENERAL OPERATION AND MAINTENANCE INSTRUCTIONS**

A physical inspection of all Unified Industries' products is required at least every six months. Visually inspect all parts, moving as well as non-moving, for cracks, excessive wear, or other damage. Particular attention should be given to the following parts: load wheels (outer surface and bearings), side guide rollers, kick-up wheels, safety straps, attachment mechanisms or bolts, and all contact surfaces. Should cracks, excessive wear, or other damage be present, replace the part.

All trollies must move freely without restriction during operation. Should any restriction be present, an inspection and correction of the problem should be made.

Rail and bridge girder running surfaces must be clean and in good condition to allow the trollies to move freely.

Runway surfaces must be parallel and level to provide proper alignment for the bridge crane end trucks.

Never operate bridge cranes without end truck trollies properly and securely fastened.

Do not load any bridge crane and/or trolley beyond its rated load as so labeled.

Safety straps are provided on trollies without built-in safety lugs in the casting. Any safety items such as safety straps, chains, etc. — provided with Unified Industries' trollies — must remain in place to provide added safety protection for the operator.

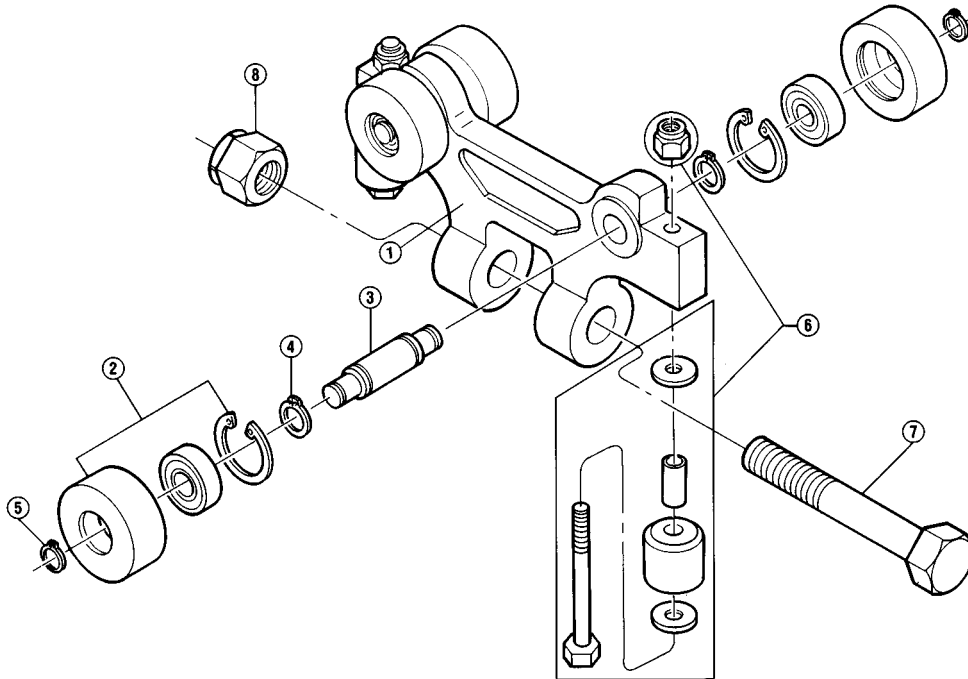
Any trolley model designed with special sliding or articulating action must be correctly mounted to allow the movement required.

## TABLE OF CONTENTS

MODEL	PAGE
400A TROLLEY .....	4
400B TROLLEY .....	4
410B TROLLEY .....	5
495A HOSE CARRIER.....	5
450A STANDARD HANGER ASSEMBLY.....	6
195A HOSE CARRIER TROLLEY .....	6
110A TROLLEY .....	7
120A TROLLEY .....	7
100B TROLLEY.....	8
100A TROLLER.....	8
112A KICK-UP TROLLEY .....	9
505A STANDARD HANGER ASSEMBLY.....	9

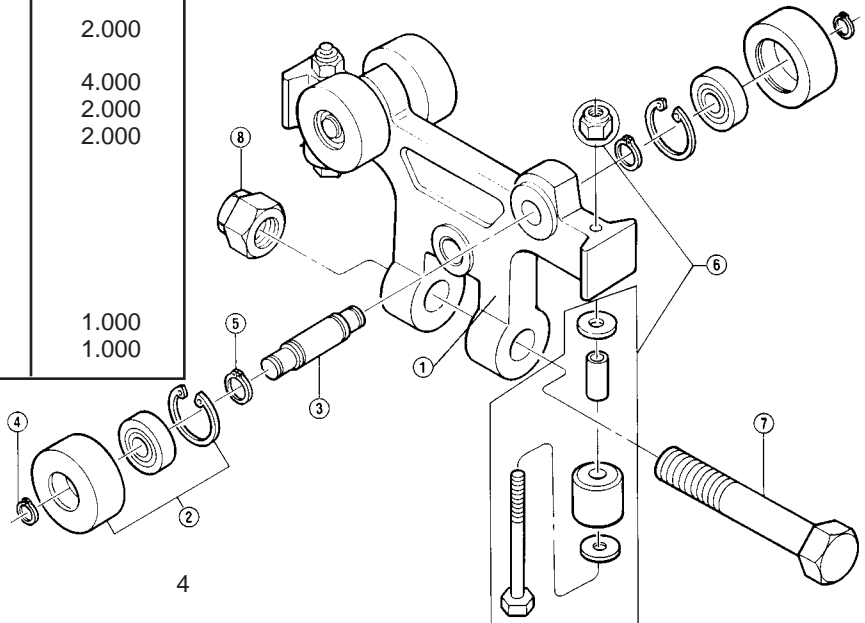
# 400A TROLLEY (20100)

REF.	STOCK CODE	DESCRIPTION	QUANTITY	REF.	STOCK CODE	DESCRIPTION	QUANTITY
1	59790	401A (Old) Casting	1.000	6	25350	485-1 White G.R. Assy	2.000
2	32510	437A 1.8 Whl. Assy.	4.000			ETA4 GR Spacer 7/8"	
		437 1.8 White Wheel				5/16 OD x 1/4 ID T	
		1614-2RS Whl Bearing				1/4-20x2.75 GD5 HHC	
		N-5000-112 Snap Ring				1/4-20 NYL Locknut	
3	57130	431 ETA-4 Wheel Stud	2.000			1/4 SAE Flat Washer	
		1/2" Dia. 12L14				485 .8 White G.R.	
4	55050	N-5100-37 Snap Ring	4.000	7	51070	5/8-11 x 4 GD5 HHB	1.000
5	55060	N-5100-50 Snap Ring	2.000	8	52250	5/8-11 Flex Locknut	1.000



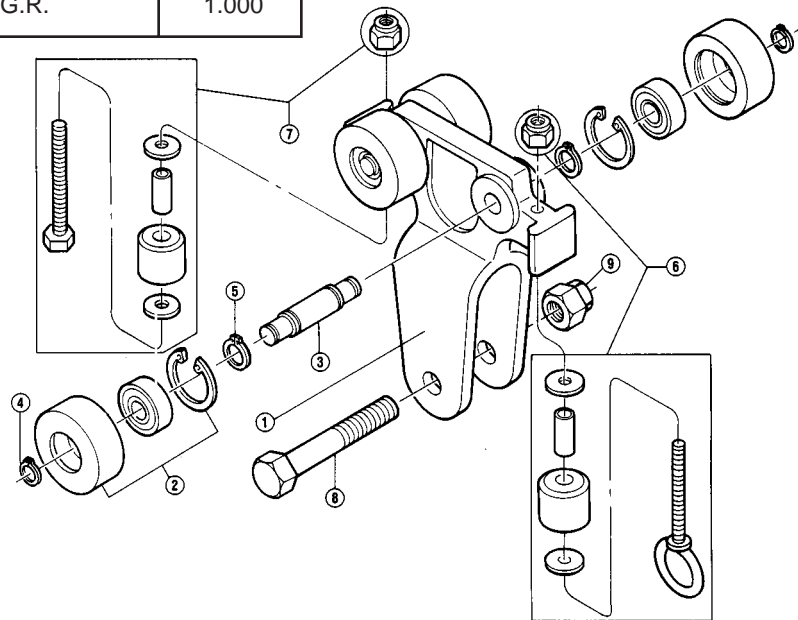
REF.	STOCK CODE	DESCRIPTION	QUANTITY
1	59800	401B (New) Casting	1.000
2	32510	437A 1.8 Whl. Assy	4.000
		437 1.8 White Wheel	
		1614-2RS Whl Bearing	
		N-5000-112 Snap Ring	
3	57130	431 ETA-4 Wheel Stud	2.000
		1/2" Dia. 12L14	
4	55050	N-5100-37 Snap Ring	4.000
5	55060	N-5100-50 Snap Ring	2.000
6	25360	485-2 White G.R. Assy	2.000
		ETA4 GR Spacer 7/8"	
		5/16 OD x 1/4 ID T	
		1/4-20 x 2-1/2 GD5 HH	
		1/4-20 NYL Locknut	
		1/4 SAE Flat Washer	
		485 .8 White G.R.	
7	51070	5/8-11 x 4 GD5 HHB	1.000
8	52250	5/8-11 Flex Locknut	1.000

# 400B TROLLEY (20110)



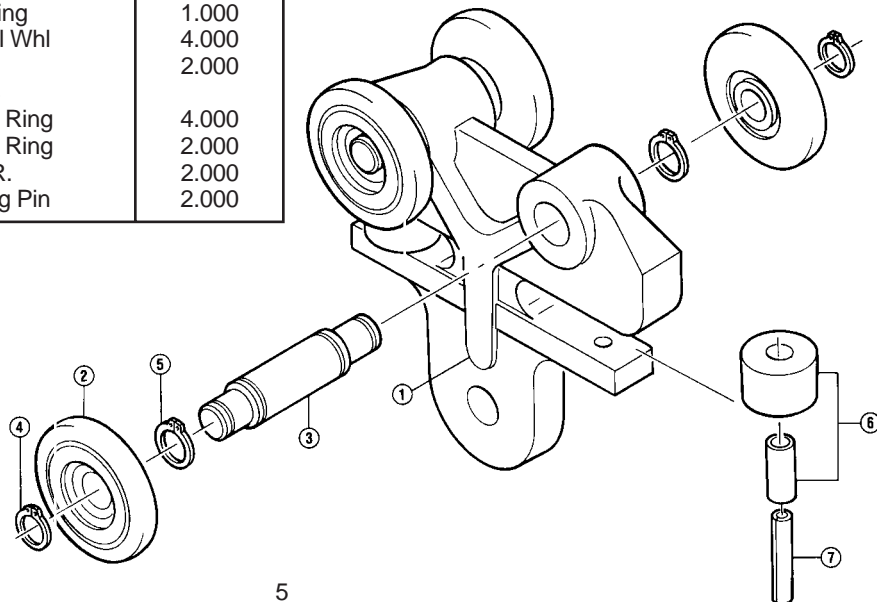
# 410B TROLLEY (20140)

REF.	STOCK CODE	DESCRIPTION	QUANTITY	REF.	STOCK CODE	DESCRIPTION	QUANTITY
1	59840	411 Trolley Casting	1.000	7	25360	485-2 White G.R. Assy	1.000
2	32510	437A 1.8 Whl. Assy.	4.000			ETA4 GR Spacer 7/8"	1.000
		437 1.8 White Wheel				5/16 OD x 1/4 ID T	
		1614-2RS Whl Bearing				1/4-20 x 2-1/2 GD5 HH	1.000
		N-5000-112 Snap Ring				1/4-20 Nyl Locknut	1.000
3	57130	431 ETA-4 Wheel Stud	2.000			1/4 SAE Flat Washer	2.000
		1/2" Dia. 12L14				485 .8 White G.R.	
4	55050	N5100-37 Snap Ring	4.000	8	50810	1/2-13 x 3 GD5 HHB	1.000
5	55060	N5100-50 Snap Ring	2.000	9	52180	1/2-13 Flex Locknut	1.000
6	25370	485-3 White G.R. Assy	1.000				
		ETA4 GR Spacer 7/8"	1.000				
		5/16 OD x 1/4 ID T					
		1/4-20 x 2.5 Eyebolt	1.000				
		1/4-20 Nyl Locknut	1.000				
		1/4 SAE Flat Washer	2.000				
		485 .8 White G.R.	1.000				



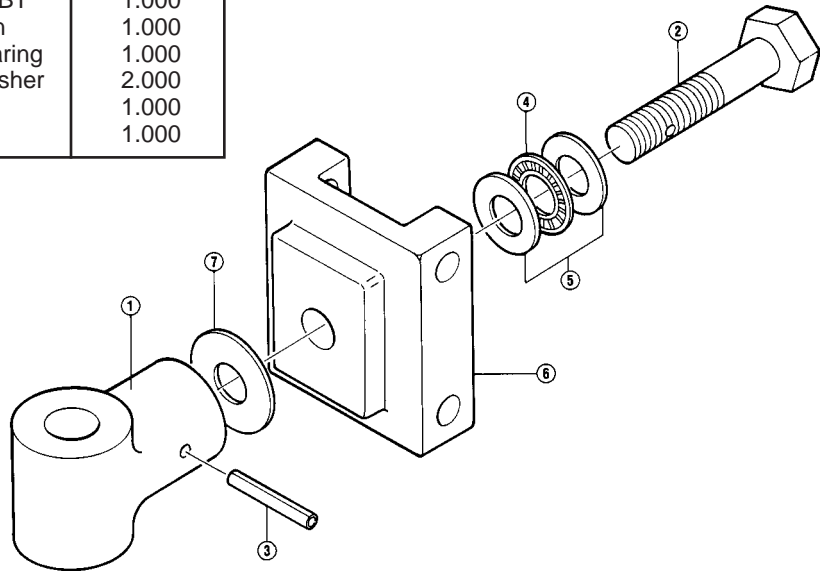
REF.	STOCK CODE	DESCRIPTION	QUANTITY
1	59900	496 Trolley Casting	1.000
2	58240	198 PA969-1 Nyl Whl	4.000
3	57150	497 Wheel Stud	2.000
		9/16" Dia. 12L14	
4	55070	N-5100-43 Snap Ring	4.000
5	55080	N-5100-56 Snap Ring	2.000
6	70040	499 .8 Nylon G.R.	2.000
7	54190	1/4 x 1-1/2 Spring Pin	2.000

# 495A HOSE CARRIER (20150)



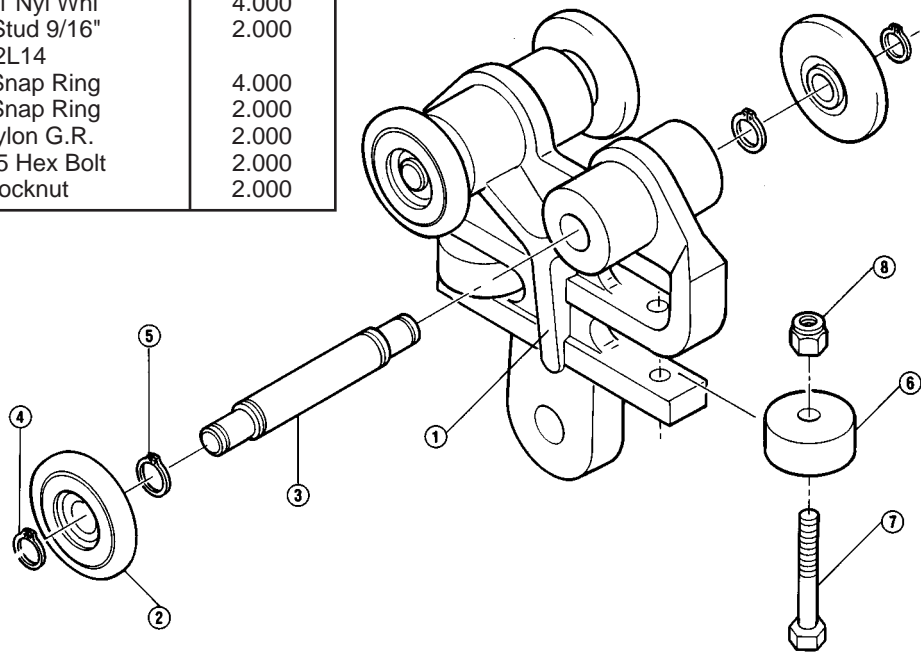
## 405A STANDARD HANGER ASSEMBLY (25260)

REF.	STOCK CODE	DESCRIPTION	QUANTITY
1	59830	406 T Mn Br Casting	1.000
2	51020	5/8-11 x 2.5 GD5 TR.BT	1.000
3	54180	3/16 x 1.25 Spring Pin	1.000
4	56150	NTA-1018 Thrust Bearing	1.000
5	53370	TRC-1018 Thrust Washer	2.000
6	59890	475 Hanger Casting	1.000
7	53070	5/8 SAE Flat Washer	1.000



## 195A HOSE CARRIER TROLLEY (20090)

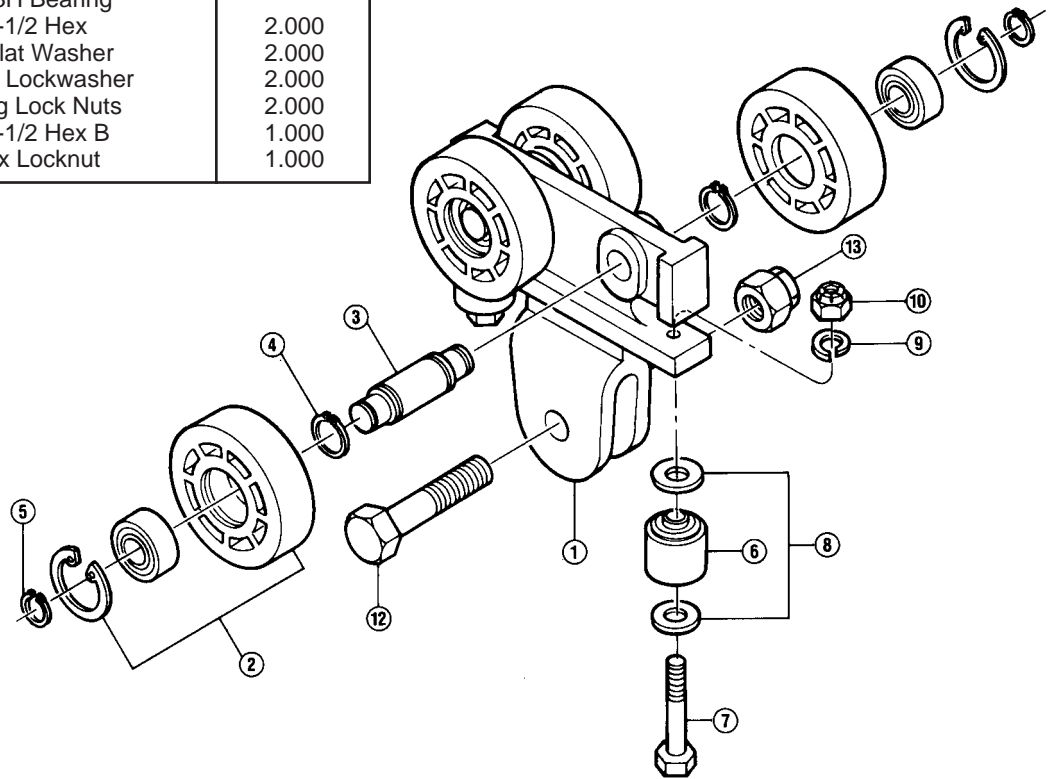
REF.	STOCK CODE	DESCRIPTION	QUANTITY
1	59700	196 Cable Trolley CA	1.000
2	58240	198 PA696-1 Nyl Whl	4.000
3	57160	197 Wheel Stud 9/16" 9/16" Dia. 12L14	2.000
4	55070	N-5100-43 Snap Ring	4.000
5	55080	N-5100-56 Snap Ring	2.000
6	70020	199 1.25" Nylon G.R.	2.000
7	50260	1/4-20 x 1.75 Hex Bolt	2.000
8	52010	1/4-20 Nyl Locknut	2.000



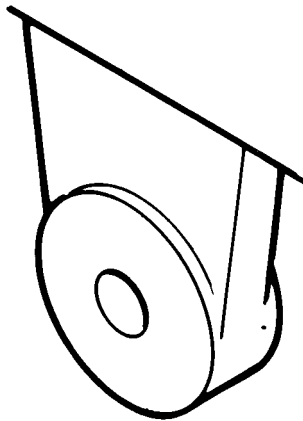
REF.	STOCK CODE	DESCRIPTION	QUANTITY
1	59470	111 Yoke Trolley Casting	1.000
2	32020	137-A 3.2 Red Whl Asst	4.000
3	57120	137 3.2" Red Wheel 6203-2Z Whl Bearing N-5000-156 Snap Ring 130 Wheel Stud 3/4" 3/4" Dia. 12L14	2.000
4	55090	N-5100-66PP Snap Ring	4.000
5	55040	N-5100-075 Snap Ring	2.000
6	25160	185-A Red G.R. Assy 185 1.25" Red G.R. ASF-175-3H Bearing	2.000
7	50530	3/8-16 x 2-1/2 Hex	2.000
8	53040	3/8 SAE Flat Washer	2.000
9	53200	3/8 Spring Lockwasher	2.000
10	52090	3/8-16 Hug Lock Nuts	2.000
11	51060	5/8-11 x 3-1/2 Hex B	1.000
12	52250	5/8-11 Flex Locknut	1.000

## 110A TROLLEY (20050)

## 110A TROLLEY W/EYEBOLT (20051)



## 120A TROLLEY (20070)

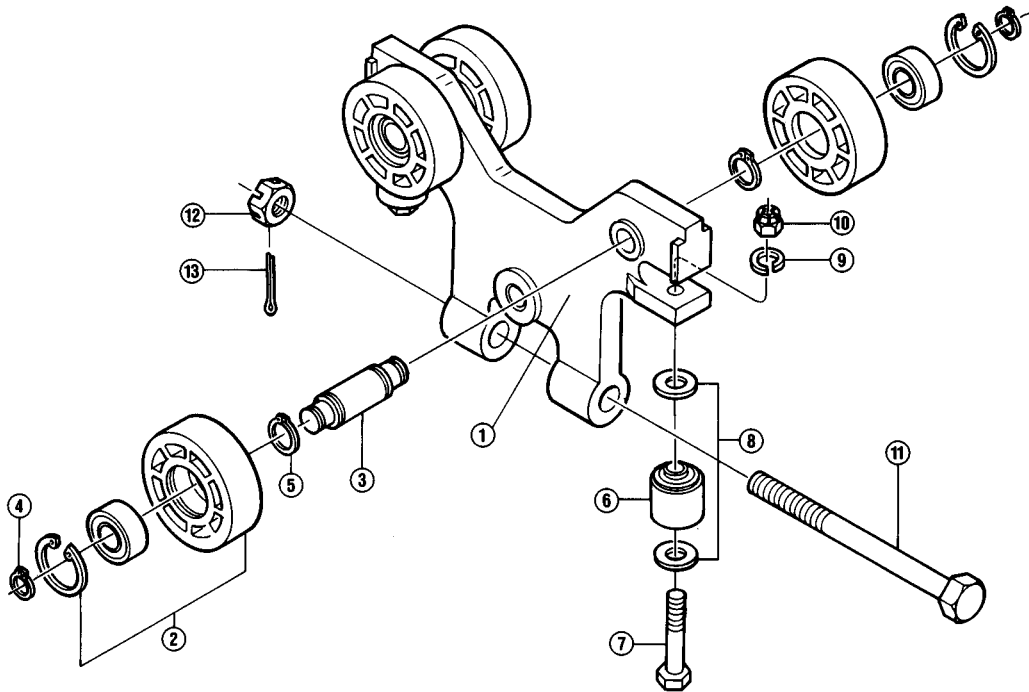


REF.	STOCK CODE	DESCRIPTION	QUANTITY
1	59500	121 Flat Trolley Casting	1.000
2	32020	137-A 3.2 Red Whl Assy 137 3.2" Red Wheel 6203-2Z Whl Bearing N-5000-156 Snap Ring	4.000
3	57120	130 Wheel Stud 3/4" 3/4" Dia. 12L14	2.000
4	55090	N-5100-66PP Snap Ring	4.000
5	55040	N-5100-075 Snap Ring	2.000
6	25160	185-A Red G.R. Assy 185 1.25" Red G.R. ASF-175-3H Bearing	2.000
7	50530	3/8-16 x 2-1/2 Hex	2.000
8	53040	3/8 SAE Flat Washer	2.000
9	53200	3/8 Spring Lockwasher	2.000
10	52080	3/8-16 Heavy Nylon Nut	2.000



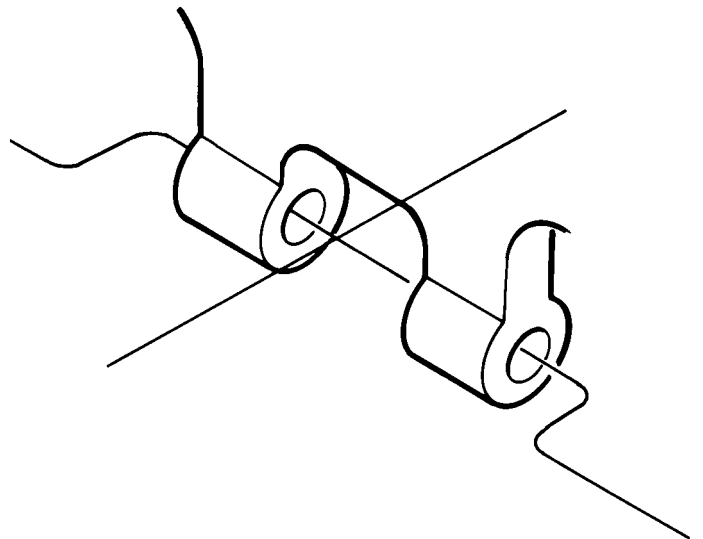
## 100B TROLLEY (20020)

REF.	STOCK CODE	DESCRIPTION	QUANTITY	REF.	STOCK CODE	DESCRIPTION	QUANTITY
1	59400	101B (New) Casting	1.000	6	25160	185-A Red G.R. Assy	2.000
2	32020	137-A 3.2 Red Whl Assy	4.000			185 1.25" Red G.R.	
		137 3.2" Red Wheel				ASF-175-3H Bearing	
		6203-2Z 5/8 ID Bearing		7	50530	3/8-16 x 2-1/2 GD5 HHS	2.000
		N-5000-156 Snap Ring		8	53040	3/8 SAE Flat Washer	2.000
3	57120	130 Wheel Stud 3/4"	2.000	9	53200	3/8 Spring Lockwasher	2.000
		3/4" Dia. 12L14		10	52090	3/8-16 Flexlock Nut	2.000
4	55090	N-5100-66PP Snap Ring	4.000	11	51410	3/4-10 x 7-1/2 Hex Bolt	1.000
5	55040	N-5100-075 Snap Ring	2.000	12	52370	3/4-10 SM Slot Hex Nut	1.000
				13	54060	1/8 x 1-1/2 Cotter Pin	1.000



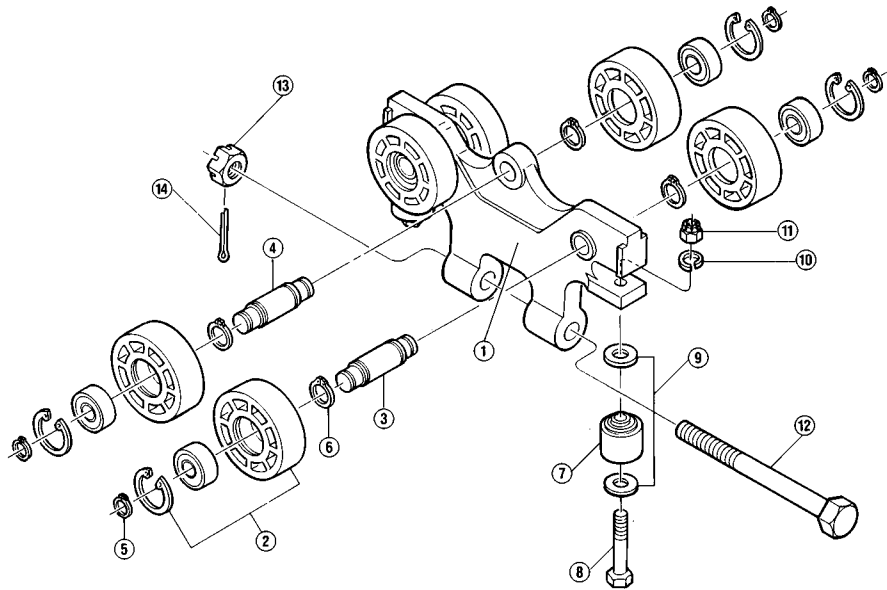
## 100A TROLLEY (20010)

REF.	STOCK CODE	DESCRIPTION	QUANTITY
1	59390	101 Trolley Casting	1.000
2	32020	137-A 3.2 Red Whl Assy	4.000
		137 3.2" Red Wheel	
		6203-2Z Wheel Bearing	
		N-5000-156 Snap Ring	
3	57120	130 Wheel Stud 3/4"	2.000
		3/4" Dia. 12L14	
4	55090	N-5100-66PP Snap Ring	4.000
5	55040	N-5100-075 Snap Ring	2.000
6	25160	185-A Red G.R. Assy	2.000
		185 1.25" Red G.R.	
		ASF-175-3H Bearing	
7	50530	3/8-16 x 2-1/2 Hex	2.000
8	53040	3/8 SAE Flat Washer	2.000
9	53200	3/8 Spring Lockwasher	2.000
10	52090	3/8-16 Hug Lock Nuts	2.000
11	51410	3/4-10 x 7-1/2 Hex Bolt	1.000
12	52370	3/4-10 SM Slot Hex Nut	1.000
13	54060	1/8 x 1-1/2 Cotter Pin	1.000



# 112A KICK-UP TROLLEY (20060)

REF.	STOCK CODE	DESCRIPTION	QUANTITY	REF.	STOCK CODE	DESCRIPTION	QUANTITY
1	59480	113 K.U. Body Casting	1.000	6	55040	N-5100-075 Snap Ring	3.000
2	32020	137-A 3.2 Red Whl Assy	4.00	7	25160	185-A Red G.R. Assy	2.000
	32025	137 3.2" Red Wheel	2.00			185 1.25" Red G.R.	
		6203-2Z Whl Bearing				ASF-175-3H Bearing	
3	57120	N-5000-156 Snap Ring		8	50530	3/8-16 x 2-1/2 Hex	2.000
		130 Wheel Stud 3/4"	2.000	9	53040	3/8 SAE Flat Washer	2.000
		3/4" Dia. 12L14		10	53200	3/8 Spring Lockwasher	2.000
4	57140	131 K.U. Wheel Stud	1.000	11	52090	3/8-16 Hug Lock Nuts	2.000
		3/4 Dia. 12L14		12	51410	3/4-10 x 7-1/2 Hex Bolt	1.000
5	55090	N-5100-66PP Snap Ring	6.000	13	52370	3/4-10 SM Slot Hex Nut	1.000
				14	54060	1/8 x 1-1/2 Cotter Pin	1.000



REF.	STOCK CODE	DESCRIPTION	QUANTITY
1	59450	106 T Mn. Br. Casting	1.000
2	51300	3/4-10 x 3 GR.5 Trnd	1.000
3	54190	1/4 x 1-1/2 Spring P	1.000
4	56160	NTB2035 Thrust Needle Brg	1.000
5	53320	AS2035 Thin Washer	2.000
6	53350	CL-5-SW 3/4 Chair Washer	2.000
7	59680	175/280 Hanger Casting	1.000

## 505A (25250) STANDARD HANGER ASSEMBLY

